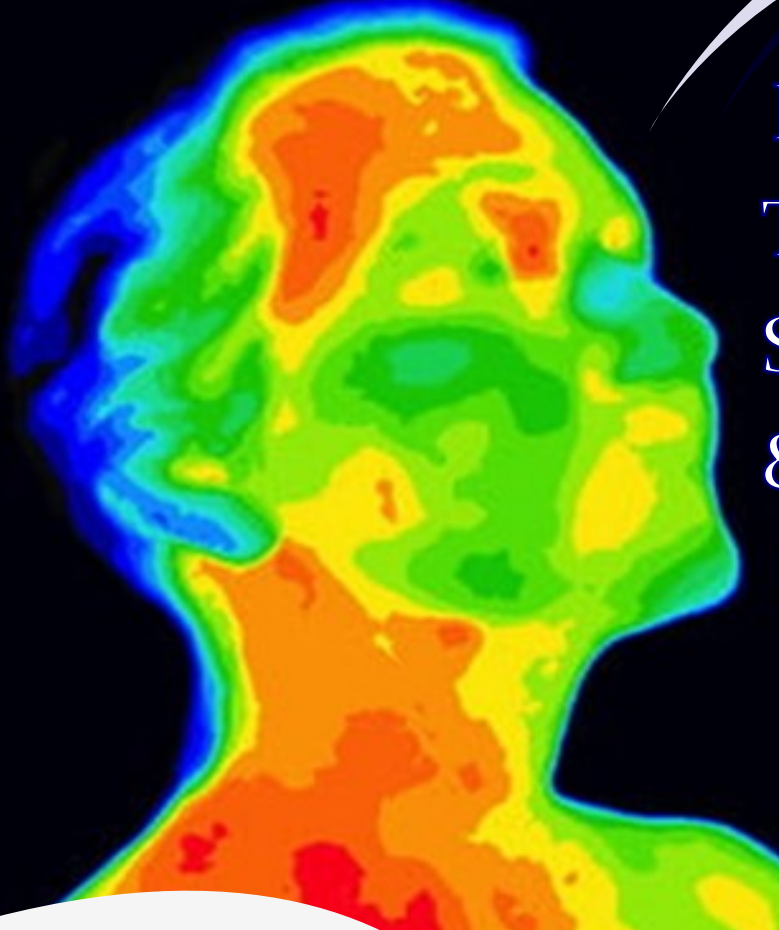


# ***DISEASE PREVENTION & CONTROL***

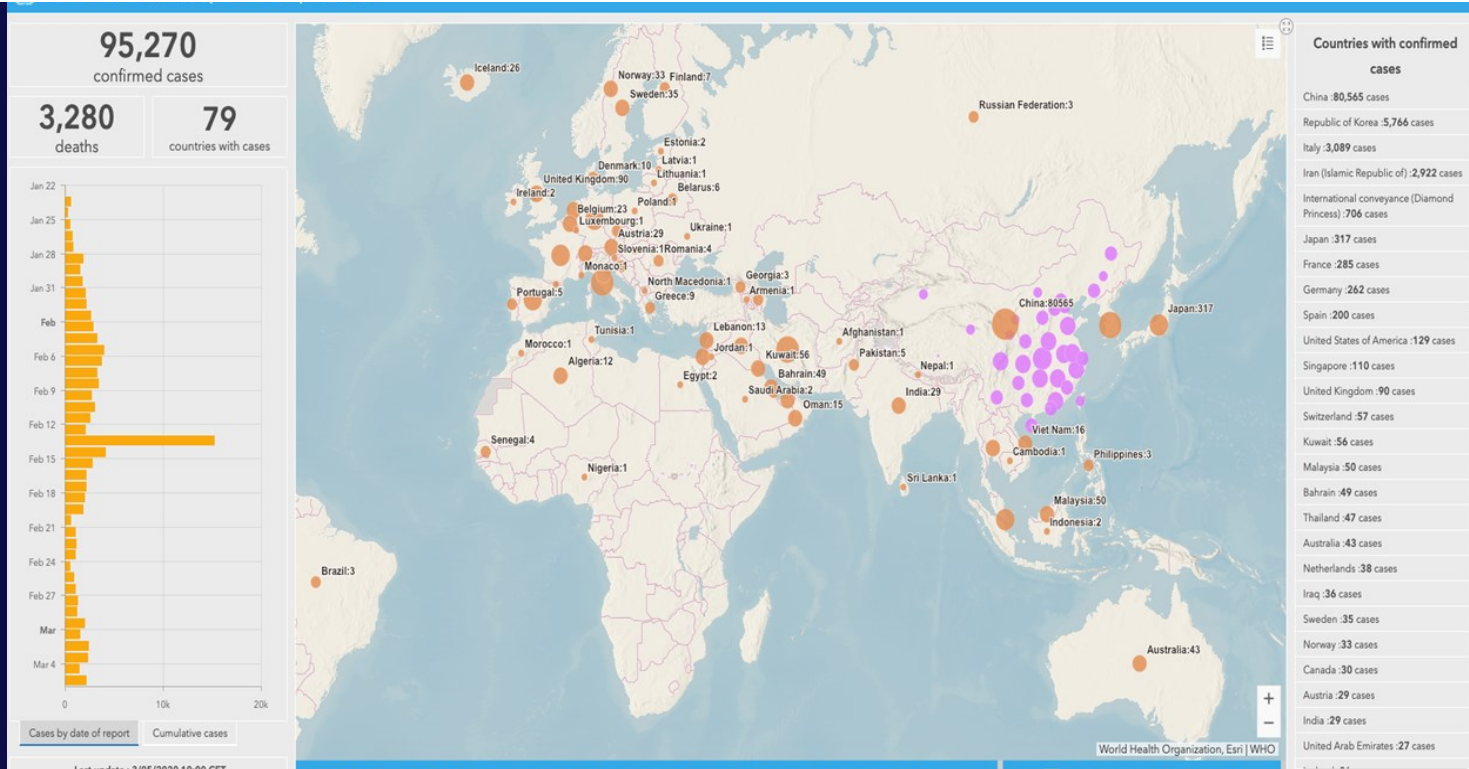


Human  
Temperature  
Screening  
& AI Solution

A solution to  
address your  
COVID-19  
concerns.

*A Solution by:*

 **G3 Global**



The early 2020 new coronavirus outbreak obstructed the lives of hundreds of millions of Chinese & resulted in the loss of hundreds of lives. This posed an urgent need of enhanced & sustained epidemic prevention. As is noted in the "Diagnosis of New Coronavirus-caused Pneumonia (Tentative, Ver 4)" from National Health Commission, early symptoms of new coronavirus infection include fever ( $>37.3^{\circ}\text{C}$ ), fatigue, dry coughs, etc.

**Body Temperature Measurement:  
Most Effective Way  
of identifying early  
signs of infection!!!!**



G3 Global Bhd has inked a collaboration agreement with China's SenseTime Group Ltd to develop new artificial intelligence (AI) products and solutions in Malaysia in 2019. With our roots in Malaysia, together with our unrivaled understanding plus insights of multiple local businesses, industries, governments and community needs, and coupled as the strategic partner of SenseTime in Malaysia, we are poised to unlock another era of human development through the use of artificial intelligence to improve and enhance all aspects of human life in work, play, healthcare, security, safety and beyond. SenseTime is the world's leading artificial intelligence (AI) company, focused on computer vision and deep learning. SenseTime leads the market in almost all vertical industries, including smart city, smartphone, mobile Internet, online entertainment, automobile, finance, retail, education, real estate and so forth. The company boasts more than 700 customers and partners in China and overseas, including world-renowned institutions and companies such as Massachusetts Institute of Technology (MIT), Qualcomm, NVIDIA, Honda, Alibaba, UnionPay, Xiaomi, OPPO, vivo, Weibo.

Issues with current temperature measurement :

Since hand-held scanners dominate current body temperature measurement, this raises the risk of physical contact-based infection & brings in issues of heavy manpower input & mundane works for sites with continuous body temperature measurement requirements, including transportation hub, schools, hospitals etc.

- Huge manpower requirement
- Long line during peak hours
- Requires close proximity with subject
- High cost

## SenseTime Nebula-ITMDT Thermal Imaging Solution



Edge Box



Thermal Imaging Camera



Tripod



Mounting Plate



Black Body



Adapter

**Solution Components**

Highlights of both solutions:

- Fast Deployment
- Supports Temp Measurement and Facial Recognition
- High facial recognition accuracy even with mask
- Traceable temperature measurement and face capture record
- Full API interfaces for integration
- Widely applicable to a number of scenarios

## SenseTime Thunder-E Thermal Imaging Solution



Thermal Imaging Camera



Tablet



Standing Pole

**Solution Components**

**Intelligent detection of  
up to 110592 Points**

AI actively tracks  
the face and  
forehead area

Measure the  
highest  
temperature in the  
forehead.



## Comparison with infrared single-point temperature measurement device



Generic Product in Market

Single-point  
temperature  
measurement module

Measure one point at  
a time

- Miss other points
- Too close to users
- Need users 'cooperation



**SUCCESSFUL REFERENCE CASE**  
**BEIJING INTERNATIONAL AIRPORT**  
**TERMINAL 3**

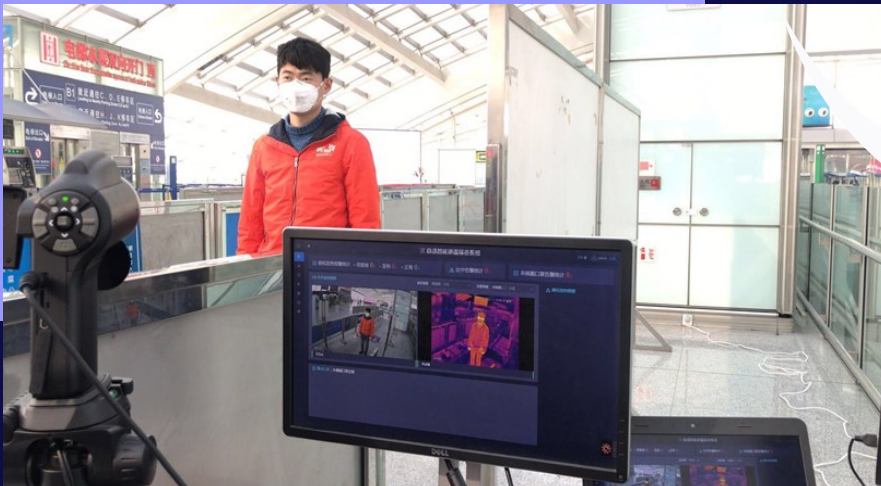
***Project brief***

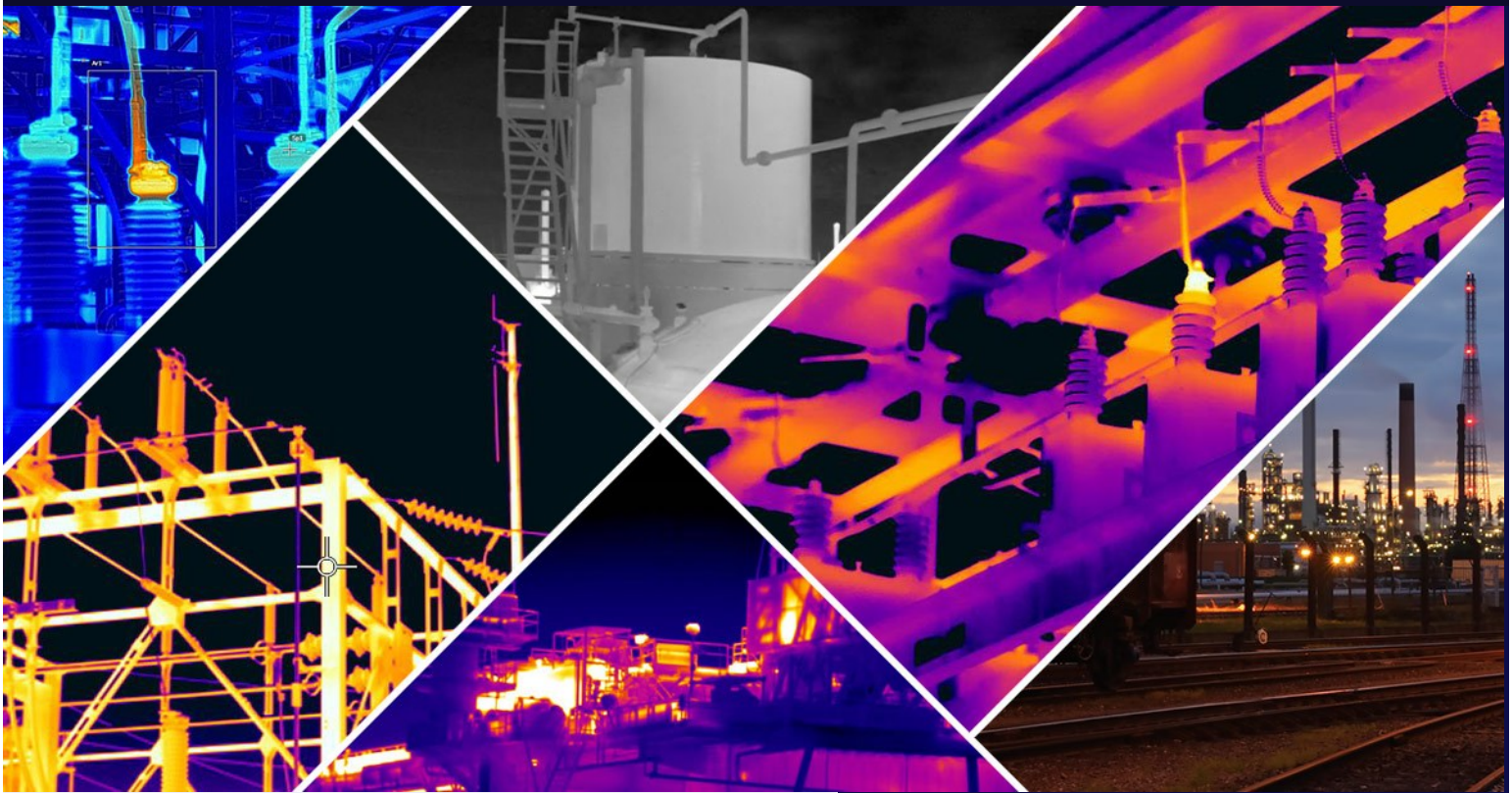
On 8th Feb, One Set of SenseNebula-ITMDDT was deployed in Beijing International Airport T3 Terminal MRT Entrance, which provides contactless temperature screening for passengers, alert notification for suspicious fever case or not wearing mask.



***Project background***

Improve passenger screening efficiency by introducing speedy contactless screening solution, which reducing the crowd gathered time and protect the officer on-duty from cross infection risk.





FOR FURTHER ENQUIRIES PLEASE CONTACT:  
TENGKU AMIR PUTRA: +60196270518  
PN ZUERYNA: +60123000341



 **G3 Global**

## G3 Global Berhad

T2-L17-1 & 3, Level 17  
IOI Resort City Tower 2, Lebuhr IRC  
IOI Resort City, 62502 Putrajaya  
MALAYSIA

+60358703660  
[www.g3global.com.my](http://www.g3global.com.my)